

Installing RouterOS with CD-Install

Document revision 1.2 (Tue Jul 13 13:06:16 GMT 2004)

This document applies to V2.9

Table of Contents

[Table of Contents](#)

[CD-Install](#)

[Description](#)

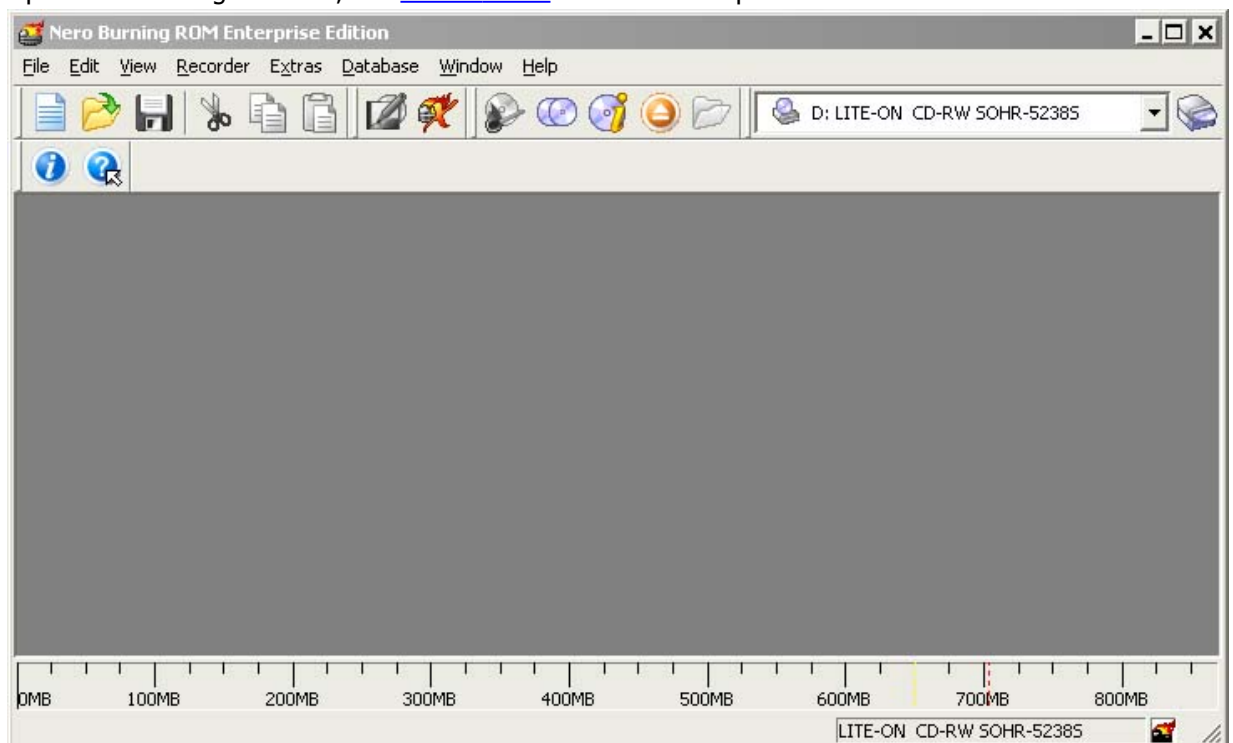
CD-Install

Description

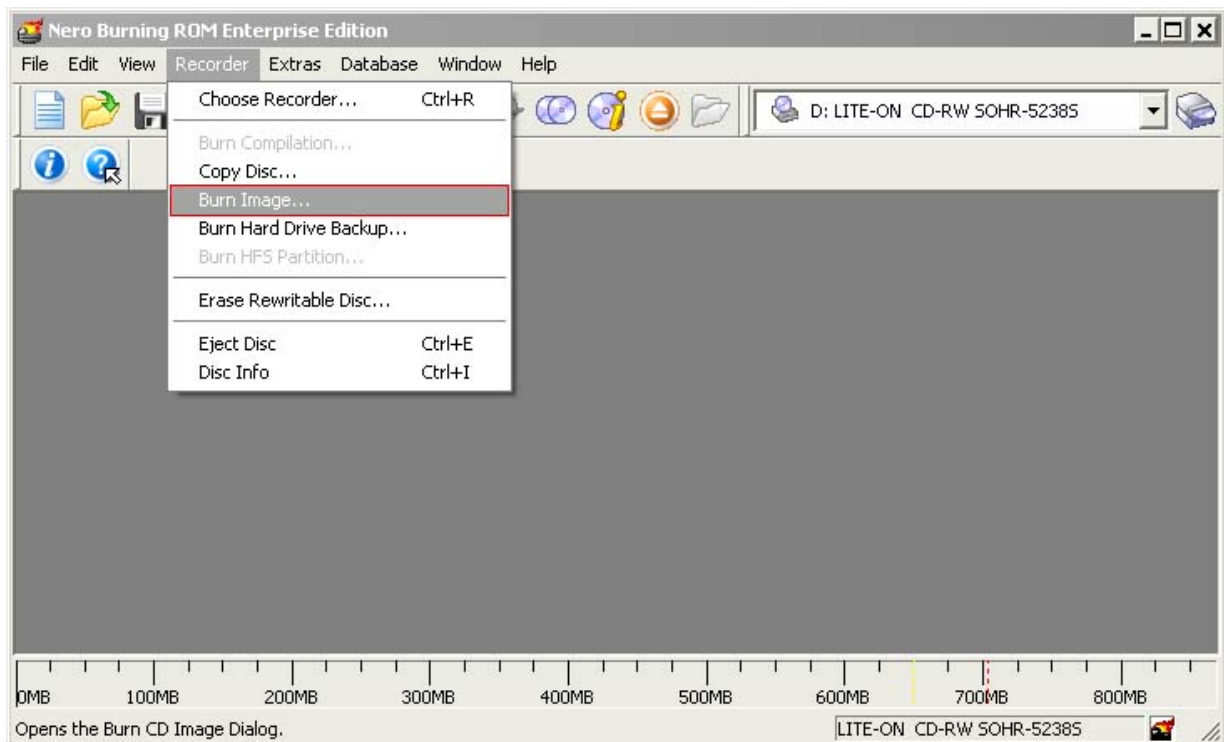
To install the RouterOS using a CD you will need a CD-writer and a blank CD. Burn the CD-image (an **.iso** file) to a CD. The archive with image can be downloaded [here](#).

Follow the instructions to install RouterOS using CD-Install:

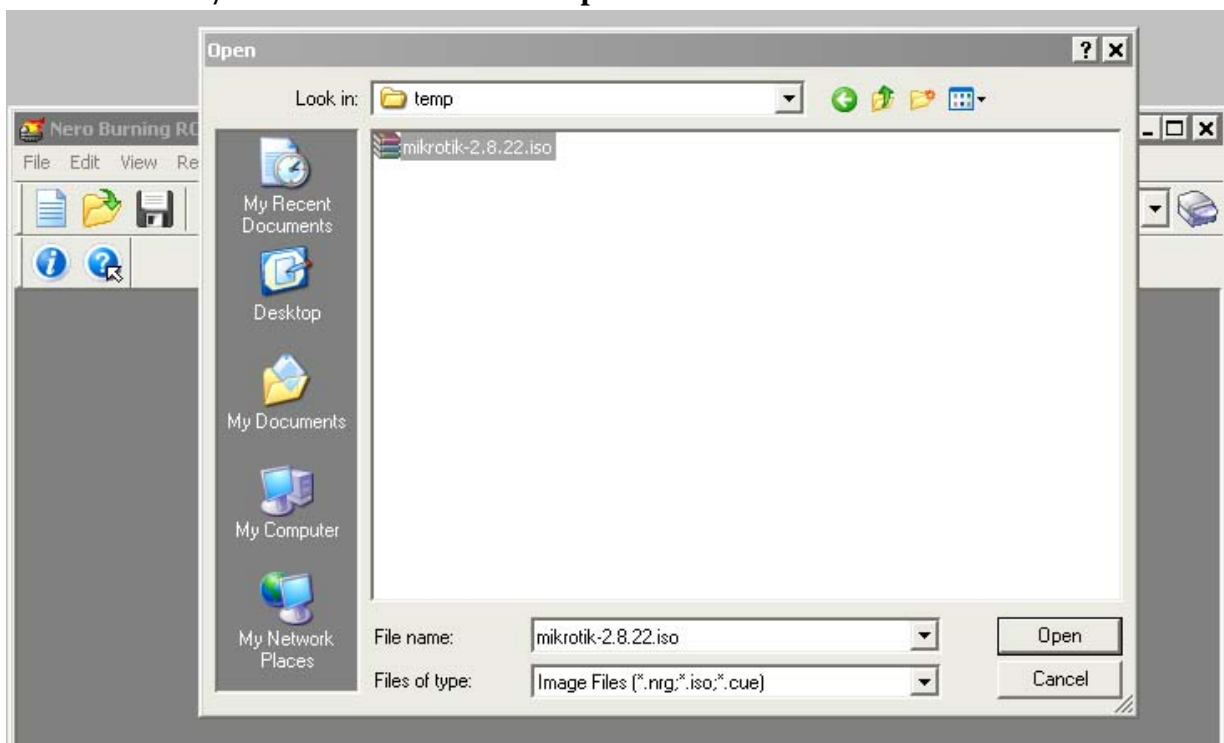
1. After downloading the CD image from www.mikrotik.com you will have an ISO file on your computer:
2. Open a CD Writing software, like [Ahead NERO](#) as in this example:



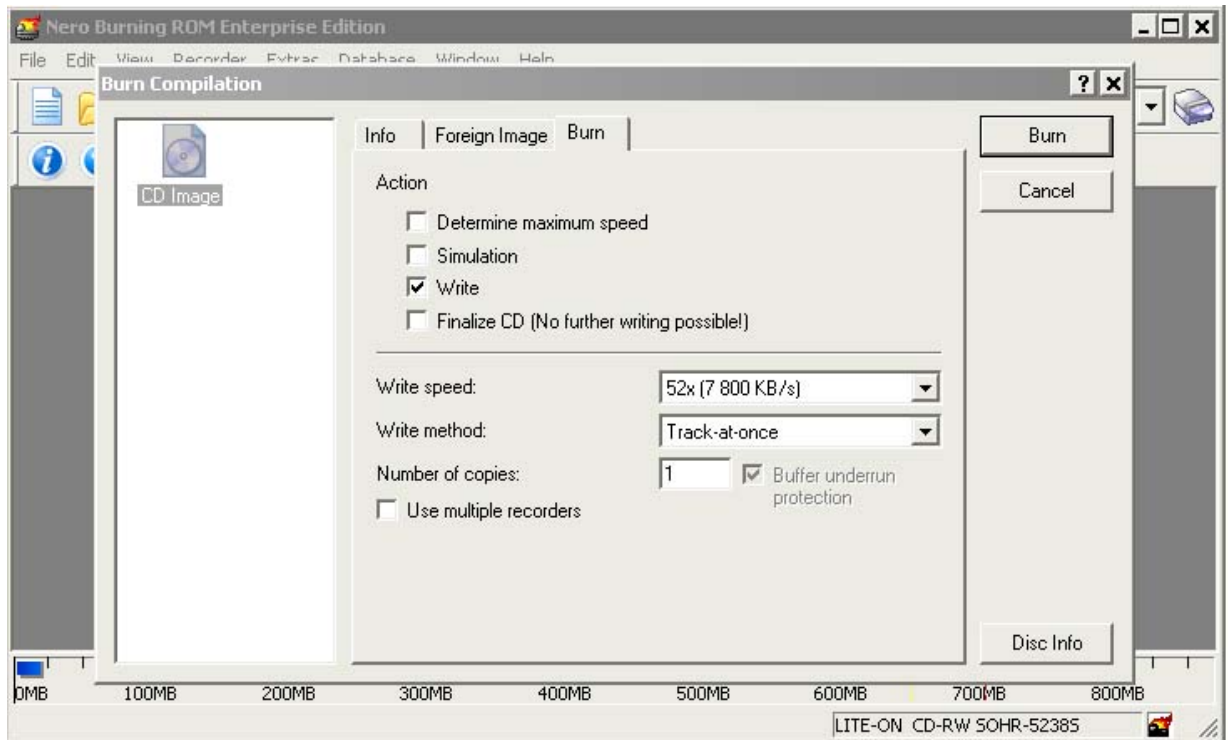
3. In the program, choose **Burn Image** entry from the **Recorder** menu (there should be similar named option in all major CD burning programs):



4. Select the recently extracted ISO file and click **Open**:



5. Finally, click **Burn** button:



6. Set the first boot device to CDROM in router's BIOS.
7. After booting from CD you will see a menu where to choose packages to install:

```

Welcome to MikroTik Router Software installation

Move around menu using 'p' and 'n' or arrow keys, select with 'spacebar'.
Select all with 'a', minimum with 'm'. Press 'i' to install locally or 'r' to
install remote router or 'q' to cancel and reboot.

[X] system           [ ] isdn             [ ] synchronous
[X] ppp              [ ] lcd              [ ] telephony
[X] dhcp             [ ] ntp              [ ] ups
[X] advanced-tools  [ ] radiolan         [ ] web-proxy
[ ] arlan            [ ] routerboard     [ ] wireless
[ ] gps              [X] routing
[ ] hotspot          [X] security

```

Follow the instructions, select needed packages, and press 'i' to install the software.

8. You will be asked for 2 questions:

```
Warning: all data on the disk will be erased!
```

```
Continue? [y/n]
```

Press [Y] to continue or [N] to abort the installation.

```
Do you want to keep old configuration? [y/n]:
```

You should choose whether you want to keep old configuration (press [Y]) or to erase the configuration permanently (press [N]) and continue without saving it. For a fresh installation, press [N].

```
Creating partition...
Formatting disk...
```

The system will install selected packages. After that you will be prompted to press 'Enter'. Before doing that, remove the CD from your CD-Drive:

```
Software installed.  
Press ENTER to reboot
```

Note: after the installation you will have to enter the Software key. See [this](#) manual how to do it.